

DRY SATURATED STEAM REQUIRED @ 100-125 PSI

CYL. GROUPS 1, 2, 3, & 4 6732 LBS./HOUR
 SIZE BOX 1 & 2 400 LBS./HOUR
TOTAL 7,132 LBS./HOUR

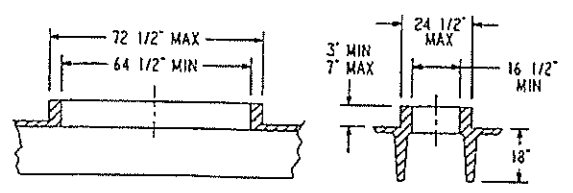
AIR REQUIREMENTS

SLASHER - 10 CFM @ 90 PSI
 AIR PUMPS (2) - 28 CFM @ 25 PSI

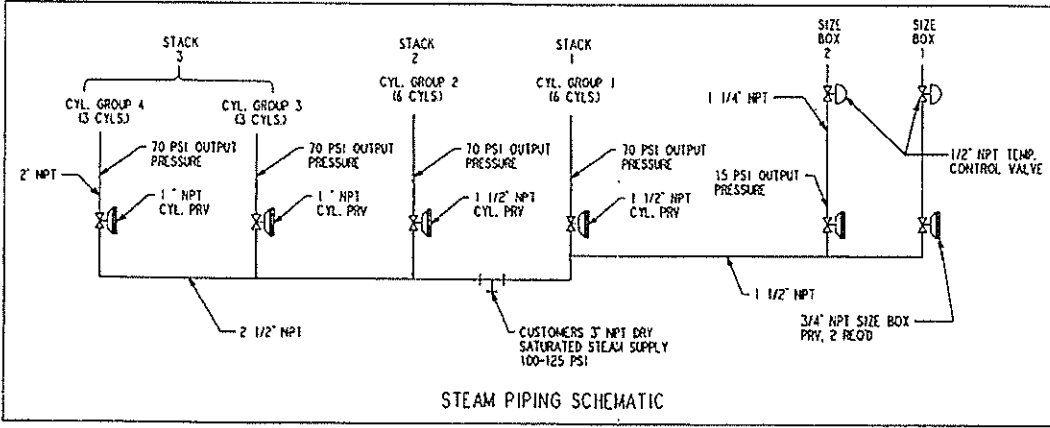
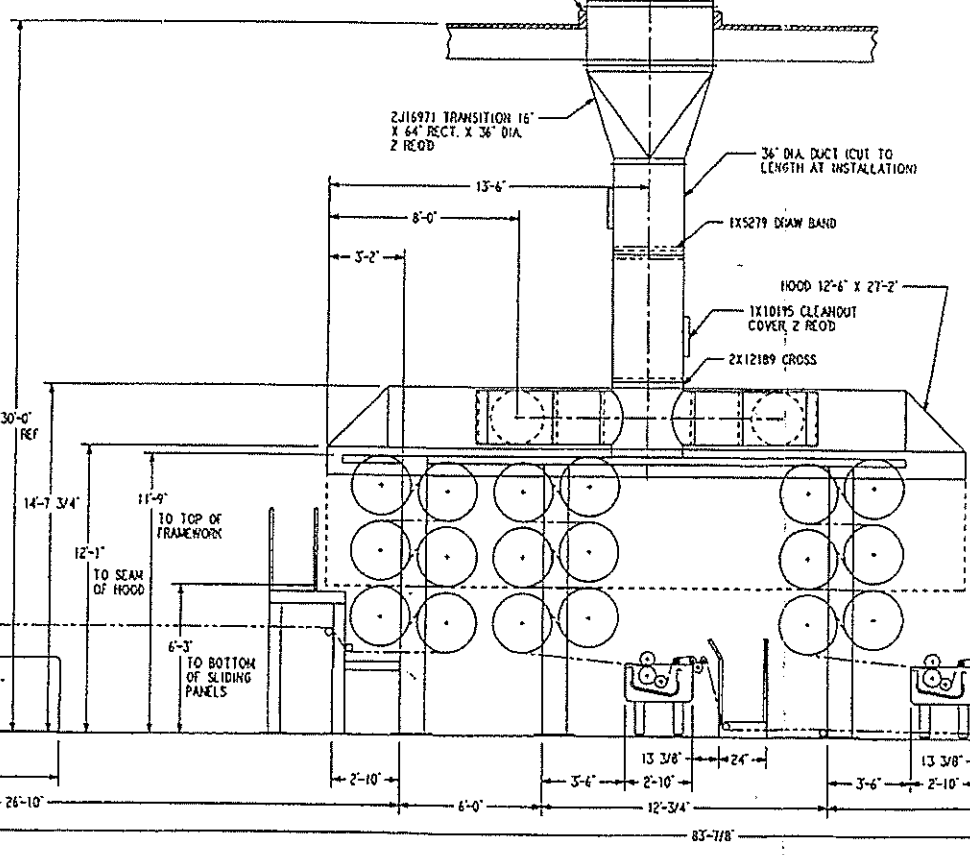
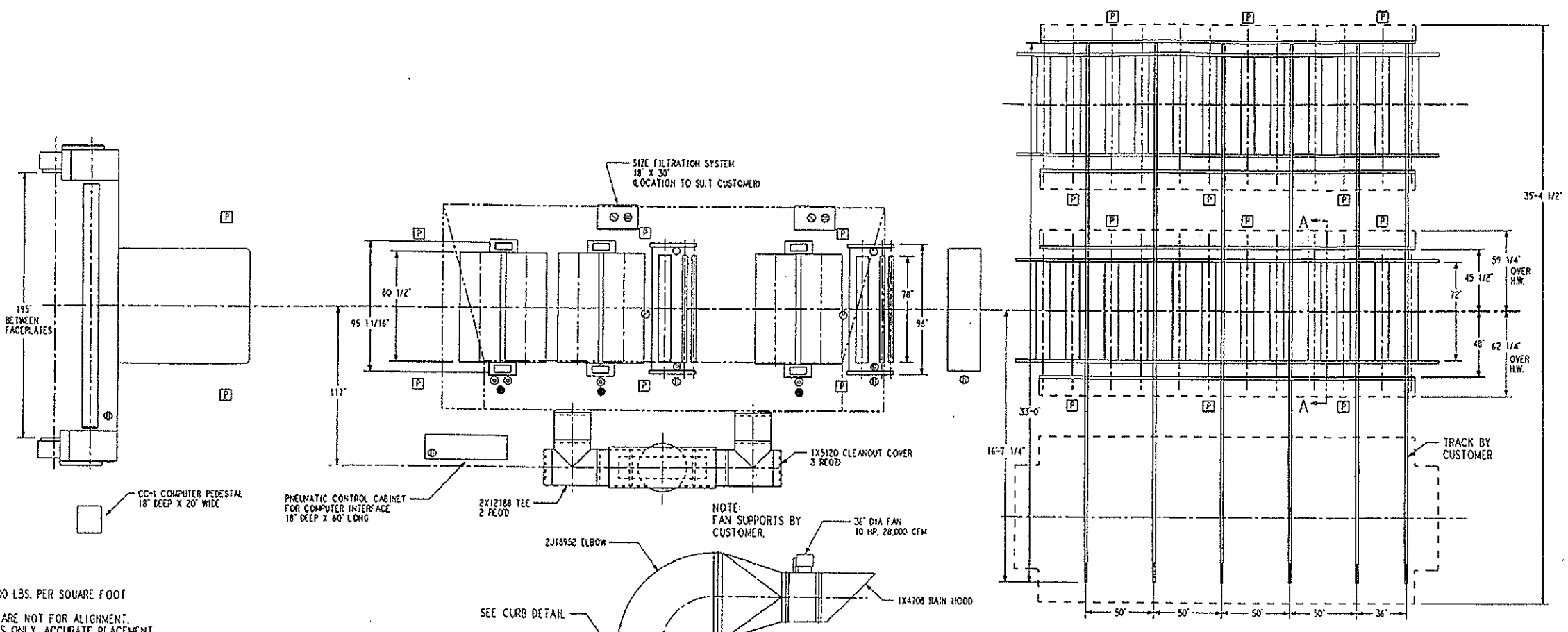
* = MAX. DEMAND RATES. TOTAL CONSUMPTION WILL BE LESS DEPENDING ON WARP SETS AND EFFICIENCIES.

- ⊕ AIR - 1/2" NPT ON HEAD END, 3/8" NPT ON SIZE FILTRATION, 1/4" NPT ON SIZE BOXES, CREEL AND PNEUMATIC CONTROL CABINET.
- ⊙ STEAM - 2" NPT ON DRYER, 3/4" NPT ON SIZE BOXES.
- CONDENSATE - 2" NPT ON DRYER
- DRAIN - 2" NPT ON SIZE BOXES.
- ⊙ SIZE - 1" NPT ON SIZE BOXES AND SIZE FILTRATION SYSTEMS.
- ⊠ PUSHBUTTON STATIONS

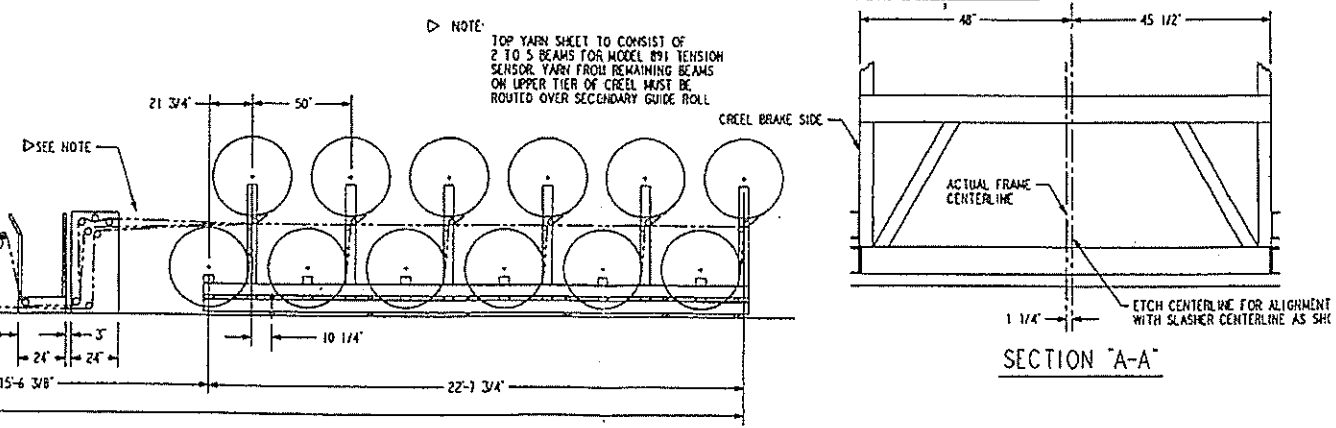
- NOTES**
- MACHINERY REQUIRES A 6" CONCRETE FLOOR FOR 4000 LBS. PER SQUARE FOOT LOADING OR EQUIVALENT.
 - FRAME DIMENSIONS AND DISTANCES BETWEEN FRAMES ARE NOT FOR ALIGNMENT. THEY ARE FOR INITIAL POSITIONING OF COMPONENTS ONLY. ACCURATE PLACEMENT OF THE MACHINE COMPONENTS MUST BE ACCOMPLISHED FROM A CENTER LINE AND BY ALIGNING AND LEVELING ALL COMPONENTS IN ACCORDANCE WITH ESTABLISHED MACHINERY PRACTICE. EXACT POSITION OF ANCHOR BOLTS TO BE DETERMINED DURING INSTALLATION OF MACHINE.
 - MACHINERY IS DESIGNED TO BE INSTALLED AT FLOOR LEVEL AS SHOWN. PITS, PADS, OR CURBS CANNOT BE ACCOMMODATED UNLESS WEST POINT IS ALERTED DURING DESIGN PROCESS.



CURB DETAIL



STEAM PIPING SCHEMATIC



SECTION 'A-A'

PART NO. LOCATION	TOLERANCES			EXCEPT WHERE NOTED OTHERWISE	SLASHER LAYOUT					
	LINEAR	ANGULAR	FINISH		F/C CANNON PLANT 1 MILL 6 D73209, D81482	DESIGNED	DRAWN	CHECKED	APPROVED	
	±	±	✓		DATE 4/10/95	SCALE 1/4"=1'-0"	DESIGNED BM	DRAWN KNB	CHECKED	APPROVED
REVISIONS					WEST POINT FOUNDRY AND MACHINE CO. WEST POINT, GEORGIA, U.S.A. 4L3270-SH.1					